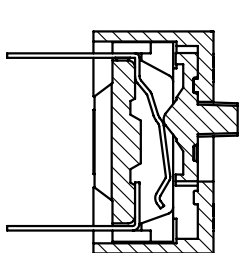
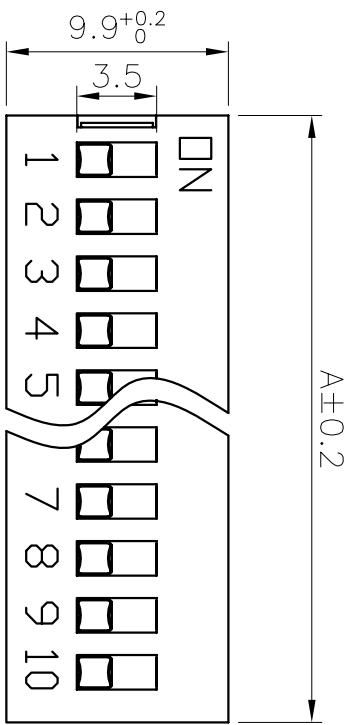
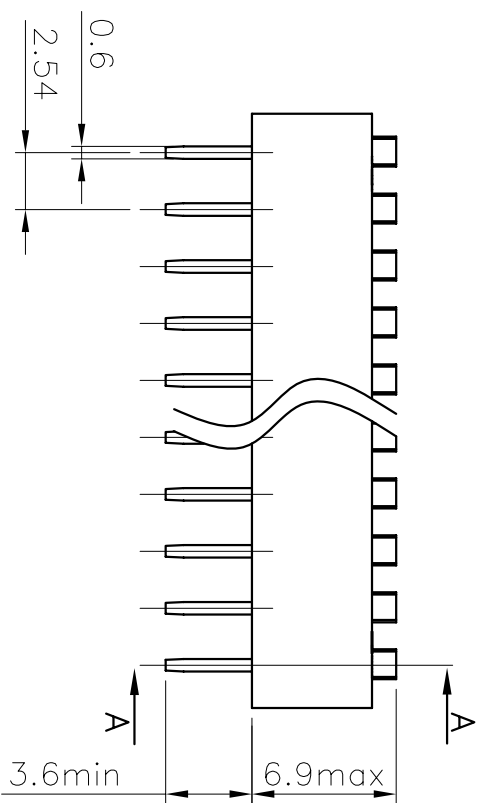


REV.	DESCRIPTION	DRAWN	CHECKED	APPROVED
A	NEW RELEASE	LXB		



SECTION A-A



PROD. NO.	Position	DIM. A (mm)
DS-02	2	6.64
DS-03	3	9.18
DS-04	4	11.72
DS-05	5	14.26
DS-06	6	16.8
DS-07	7	19.34
DS-08	8	21.88
DS-09	9	24.42
DS-10	10	26.96
DS-12	12	32.04

Note:

I. MECHANICAL

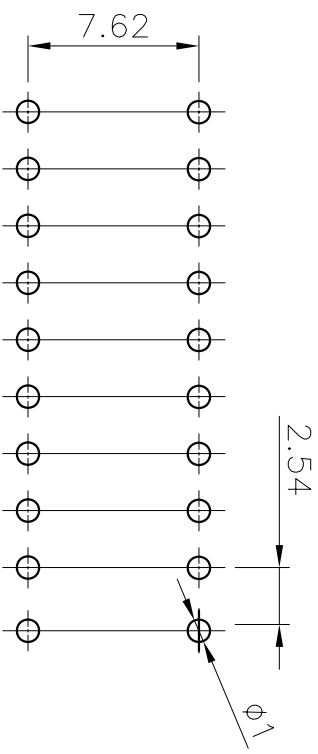
- 1, Operation Force : 8N Max
- 2, Operation Temp : -25°C ~ +70°C
- 3, Storage Temp : -40°C ~ +85°C
- 4, Stroke : 2mm

II. ELECTRICAL

- 1, Electrical Life: 2000 operations cycles per switch 24VDC, 25mA
- 2, Non-Switching Rating : 100mA, 50VDC
- 3, Switching rating: 25mA, 24VDC
- 4, Contact resistance : (a) 500 mΩ max. at initial (b) 100 mΩ min. after life test
- 5, Insulation Resistance : 100MΩ Min, AT 500VDC
- 6, Dielectric Strength : 500VAC / 1 minute
- 7, Capacitance : 5pF max
- 8, Circuit : Single pole double throw

III. SOLDERING AND CLEANING PROCESSES

- 1, Keep all switch contacts in their "OFF" position for all operations
- 2, WAWW SOLDERING : Recommended Solder Temperature at 240°C max. 20 seconds
- 3, HAND SOLDERING : Use a soldering iron of 30 watts, controlled at 270°C approximately 2 seconds while applying solder
- 4, CLEANING PROCESS: When vapor methods are used do not subject the switch to solvents at temperature above 125° F (51°C)



P. C. B LAYOUT

-R