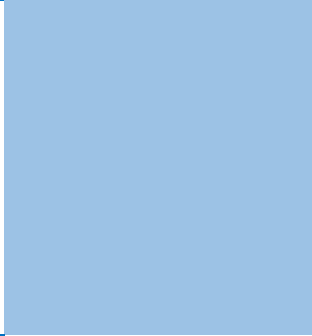
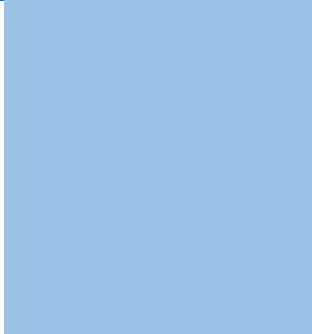


MICRO, LIMIT AND PROXIMITY SWITCHES



MANTECH

A MOBICON COMPANY

TABLE OF CONTENTS

CONTENTS	PAGE
PROXIMITY & OTHER SWITCHES	R3
SUB-MINIATURE MICRO-SWITCHES	R4
MINIATURE MICRO-SWITCHES	R5
MICRO-SWITCHES	R6
LIMIT SWITCHES	R7 – R9

OTHER CATALOGUES

2024 AUG 09

MOTORS

BRUSH, GEARED, STEPPER AND SERVO MOTORS PLUS ACCESSORIES

MANTECH
A MOBICON COMPANY

REV-0

PAGE P 1

WWW.MANTECH.CO.ZA

2024 08 09

POWER SUPPLIES & BATTERY CHARGERS

POWER SUPPLIES AND BATTERY CHARGERS

MANTECH
A MOBICON COMPANY

REV-2

PAGE A 1

WWW.MANTECH.CO.ZA

PROXIMITY & OTHER SWITCHES

PROXIMITY SWITCH : E18-D80NK



- PHOTO ELECTRIC
- 5VDC
- 30 TO 800mm SENSING
- CABLE CONNECTION

PROXIMITY SWITCH : LM12 / LM18



- INDUCTIVE TYPE
- 4mm OR 8mm
- 220VAC
- WITH LED

PROXIMITY SWITCH : SN04



- 18 x 34 x 18mm
- PNP & NPN
- 4mm
- 3-WIRE
- 10 - 30VDC

PROXIMITY SWITCH : PM12 / PM18



- 12mm OR 18mm
- PNP & NPN
- 4mm
- 3-WIRE
- 10 - 30VDC

VANE / GAP SWITCH : BPI-3C1-05



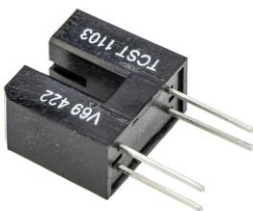
- 6 x 0.9mm GAP / APERTURE
- 50mA INPUT DIODE
- 20mA NPN OUTPUT

VANE / GAP SWITCH : TCST2103



- 3.1 x 0.6mm GAP / APERTURE
- WITH MOUNTING EARS
- 60mA INPUT DIODE
- 100mA NPN OUTPUT

VANE / GAP SWITCH : TCST1103



- 3.1 x 0.6mm GAP / APERTURE
- 60mA INPUT DIODE
- 100mA NPN OUTPUT

VANE / GAP SWITCH : TCST5250



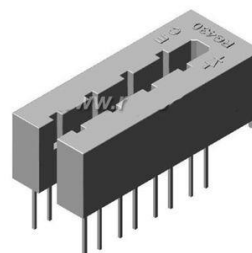
- R/ANGLED
- 2.7 x 0.5mm GAP / APERTURE
- 60mA INPUT DIODE
- 100mA NPN OUTPUT

VANE / GAP SWITCH : 170202



- 10 x 1mm GAP / APERTURE
- WITH AMP / COMPARATOR
- WITH PCB & CONNECTOR

VANE / GAP SWITCH : RG430



- 4-CHANNELS
- 3 x 1.4mm GAP / APERTURE
- 6mm RESOLUTION

SUB-MINIATURE MICRO-SWITCHES

SUB-MINI MICRO-SWITCH : KW10-Z3P



- 13 x 7 x 6mm
- 13mm ARCHED STEEL LEVER
- PCB SOLDER TERMINALS

SUB-MINI MICRO-SWITCH : KW10-Z4P



- 13 x 7 x 6mm
- 5mm PLASTIC ROLLER
- PCB SOLDER TERMINALS

SUB-MINI MICRO-SWITCH : B1752



- 13 x 7 x 6mm
- 14mm STEEL LEVER
- PCB SOLDER TERMINALS

SUB-MINI MICRO-SWITCH : B1751X



- 13 x 7 x 6mm
- PIN / PLUNGER
- PCB SOLDER TERMINALS

SUB-MINI MICRO-SWITCH : B175002



- 8 x 6 x 3mm
- 6mm PLASTIC LEVER
- PCB SOLDER TERMINALS

SUB-MINI MICRO-SWITCH : B1753X1



- 13 x 7 x 6mm
- R/ANGLED
- 14mm CURLED STEEL LEVER

SUB-MINI MICRO-SWITCH : B1752 / B17521-18



- 13 x 7 x 6mm
- R/ANGLED
- 18mm STEEL LEVER

SUB-MINI MICRO-SWITCH : B1753



- 13 x 7 x 6mm
- R/ANGLED
- 15mm CURLED STEEL LEVER

EIE – FOR ALL YOUR ELECTROMECHANICAL REQUIREMENTS



SWAN ELECTRIC – SWITCHING AND PROTECTION



**SWAN
ELECTRIC**
A MOBICON COMPANY

MINIATURE MICRO-SWITCHES

MINI MICRO-SWITCH : KW4-ZDF200 / B175GP



- 20 x 16 x 6.4mm
- 55mm STEEL LEVER
- SOLDER TERMINALS

MINI MICRO-SWITCH : KW4-Z3F200



- 20 x 16 x 6.4mm
- 25mm STEEL LEVER
- SOLDER TERMINALS

MINI MICRO-SWITCH : B175D



- 20 x 16 x 6.4mm
- 19mm ARCHED LEVER
- SOLDER TERMINALS

MINI MICRO-SWITCH : SM-05S-00C0-2-Z



- 20 x 16 x 6.4mm
- PIN / PLUNGER
- PCB SOLDER TERMINALS

MINI MICRO-SWITCH : B175FP



- 20 x 16 x 6.4mm
- 18mm LEVER W/ROLLER
- SOLDER TERMINALS

MINI MICRO-SWITCH : B175B



- 20 x 16 x 6.4mm
- 14mm STEEL LEVER
- SOLDER TERMINALS

MINI MICRO-SWITCH : B175AP



- 20 x 16 x 6.4mm
- PIN / PLUNGER
- SOLDER TERMINALS

MINI MICRO-SWITCH : B175E



- 20 x 16 x 6.4mm
- 14mm STEEL LEVER W/LIP
- SOLDER TERMINALS

WE ALSO STOCK TOGGLE SWITCHES



WE ALSO STOCK ROCKER SWITCHES



MICRO-SWITCHES

MICRO-SWITCH : KW1-103AA.4 8-6 / B180N



- 28 x 16 x 10mm
- 5mm STEEL ROLLER
- QUICK CONNECT / SOLDER TERMINALS

MICRO-SWITCH : B180L



- 28 x 16 x 10mm
- 51mm STEEL LEVER
- QUICK CONNECT / SOLDER TERMINALS

MICRO-SWITCH : B180M



- 28 x 16 x 10mm
- 24mm STEEL ARCHED LEVER
- QUICK CONNECT / SOLDER TERMINALS

MICRO-SWITCH : B180E



- 28 x 16 x 10mm
- 27mm STEEL LEVER
- QUICK CONNECT / SOLDER TERMINALS

MICRO-SWITCH : B180F



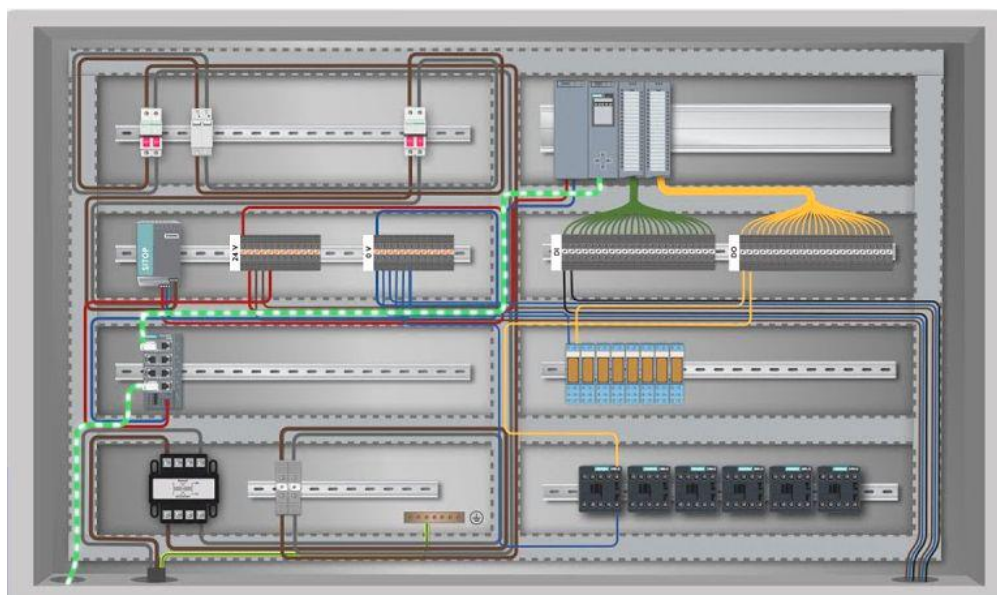
- 28 x 16 x 10mm
- 5mm STEEL ROLLER L/LEVER
- QUICK CONNECT / SOLDER TERMINALS

MICRO-SWITCH : B180D



- 28 x 16 x 10mm
- NO LEVER
- QUICK CONNECT / SOLDER TERMINALS

CALL US TODAY FOR ALL YOUR PANEL BUILDING REQUIREMENTS



MICRO-SWITCHES

MICRO-SWITCH : B183F / MS-LXW5-11M



- 49 x 25 x 18mm
- 15mm STEEL PLUNGER
- SCREW TERMINALS

MICRO-SWITCH : MS-LXW5-11N1



- 49 x 25 x 18mm
- LONG STEEL LEVER
- SCREW TERMINALS

MICRO-SWITCH : MS-LXW5-11Z



- 49 x 25 x 18mm
- STEEL PIN PLUNGER
- SCREW TERMINALS

MICRO-SWITCH : MS-LXW5-11G2



- 49 x 25 x 18mm
- SHORT STEEL ROLLER
- SCREW TERMINALS

MICRO-SWITCH : MS-LXW5-11N2



- 49 x 25 x 18mm
- SHORT STEEL LEVER
- SCREW TERMINALS

MICRO-SWITCH : MS-LXW5-11D



- 49 x 25 x 18mm
- SHORT STEEL PLUNGER
- SCREW TERMINALS

MICRO-SWITCH : MS-LXW5-11G3



- 49 x 25 x 18mm
- LONG STEEL ROLLER
- SCREW TERMINALS

MICRO-SWITCH : MS-LXW5-11Q1



- 49 x 25 x 18mm
- FIXED STEEL ROLLER
- SCREW TERMINALS

MANTECH ELECTRONICS
AND
SWAN ELECTRIC
ARE
MOBICON COMPANIES

MOBICON
Electronic Components

LIMIT SWITCHES

LIMIT SWITCH : LS-TZ-8108



- 84 X 28 x 25mm
- 18mm PLASTIC WHEEL (ADJUSTABLE LENGTH)
- CABLE ENTRY

LIMIT SWITCH : LS-TZ-8112



- 84 X 28 x 25mm
- 13mm STEEL WHEEL
- CABLE ENTRY

LIMIT SWITCH : LS-TZ-8167



- 84 X 28 x 25mm
- 100mm STEEL SPRING TAIL
- CABLE ENTRY

LIMIT SWITCH : LS-TZ-8122



- 84 X 28 x 25mm
- 13mm STEEL WHEEL @ 90-D
- CABLE ENTRY

LIMIT SWITCH : LS-TZ-8104



- 84 X 28 x 25mm
- 18mm PLASTIC WHEEL
- CABLE ENTRY

LIMIT SWITCH : LS-TZ-8169



- 84 X 28 x 25mm
- 100mm CAT'S WISKER
- CABLE ENTRY

LIMIT SWITCH : LS-TZ-8107



- 84 X 28 x 25mm
- 130mm STEEL ROD
- CABLE ENTRY

LIMIT SWITCH : LS-TZ-8166



- 84 X 28 x 25mm
- 100mm PLASTIC ROD
- CABLE ENTRY

LIMIT SWITCH : LS-TZ-8111



- 84 X 28 x 25mm
- STEEL PLUNGER
- CABLE ENTRY

CALL US TODAY FOR ALL YOUR POWER REQUIREMENTS



LIMIT SWITCHES

LIMIT SWITCH : CLS-191



- 53 X 31 x 30mm
- 50mm PLASTIC WHEEL
- CABLE ENTRY

LIMIT SWITCH : CLS-121M



- 53 X 31 x 30mm
- 18mm STEEL WHEEL
- CABLE ENTRY

LIMIT SWITCH : CLS-111



- 53 X 31 x 30mm
- PLASTIC LEVER, STEEL WHEEL
- CABLE ENTRY

LIMIT SWITCH : CLS-131



- 53 X 31 x 30mm
- STEEL LEVER & WHEEL
- CABLE ENTRY

LIMIT SWITCH : CLS-101



- 53 X 31 x 30mm
- STEEL PLUNGER
- CABLE ENTRY

LIMIT SWITCH : CLS-181



- 53 X 31 x 30mm
- LONG SPRING WIP
- CABLE ENTRY

LIMIT SWITCH : CLS-103



- 53 X 31 x 30mm
- STEEL PLUNGER W/ ROLLER
- CABLE ENTRY

LIMIT SWITCH : CLS-121



- 53 X 31 x 30mm
- 18mm PLASTIC WHEEL
- CABLE ENTRY

LIMIT SWITCH : TXCK-M110



- 63 x 100 x 30mm
- SWAPPABLE HEAD
- STEEL PLUNGER

LIMIT SWITCH : LS-ZCK-M1 + ZCKD15



- 63 x 100 x 30mm
- SWAPPABLE HEAD
- LEVER AND STEEL WHEEL

LIMIT SWITCHES

LIMIT SWITCH : LS-YXCK-J121M



- 75 x 40 x 42mm
- PLASTIC LEVER & STEEL ROLLER
- CABLE ENTRY

LIMIT SWITCH : LS-YXCK-J108M



- 75 x 40 x 42mm
- STEEL SPRING WIP
- CABLE ENTRY

LIMIT SWITCH : LS-YXCK-J1161



- 75 x 40 x 42mm
- STEEL PLUNGER
- CABLE ENTRY

LIMIT SWITCH : LS-YXCK-J167



- 75 x 40 x 42mm
- STEEL PLUNGER
- CABLE ENTRY

LIMIT SWITCH : LS-YXCK-J10541M



- 75 x 40 x 42mm
- STEEL WHEEL
- CABLE ENTRY

LIMIT SWITCH : LS-YXCK-J10511



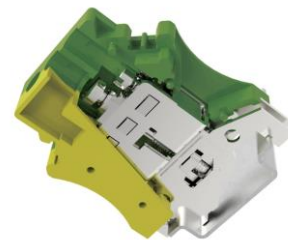
- 75 x 40 x 42mm
- PLASTIC WHEEL
- CABLE ENTRY

LIMIT SWITCH : LS-YXCK-J10541



- 75 x 40 x 42mm
- PLASTIC WHEEL
- CABLE ENTRY

MANTECH – FOR ALL YOUR CONNECTORS



TEST AND MEASUREMENT INSTRUMENTS - AT MANTECH...



OTHER PRODUCTS AVAILABLE FROM US

DIODES



EARTH LEAKAGES



SOLDER



ISOLATORS / BREAKERS / CHANGE OVERS



BATTERIES



POWER RESISTORS



INDUSTRIAL PLUGS & SOCKETS



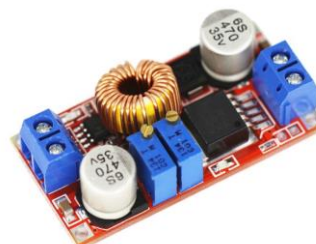
BUS BARS



STEM / EDUCATION



DEVELOPMENT BOARDS





www.mantech.co.za

CITY		TEL	EMAIL
CPT		+27 21 535 3150	cape@mantech.co.za
		+27 76 382 0045	
JHB		+27 11 493 9307	sales@mantech.co.za
		+27 65 589 4900	
KZN		+27 31 309 7686	kzn@mantech.co.za
		+27 71 497 1034	
PE		+27 41 004 0040	pe@mantech.co.za
		+27 64 846 8814	

MANTECH IS A MOBICON COMPANY