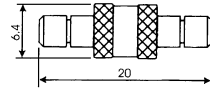
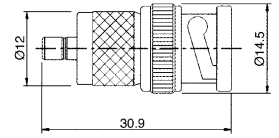


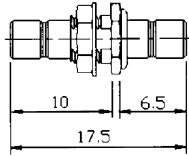
M516105
Double SMB female
(gold plated)



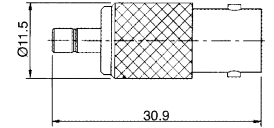
M51810
SMB female to BNC male gold-pin



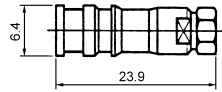
M5162
Double SMB female bulkhead
(gold plated)



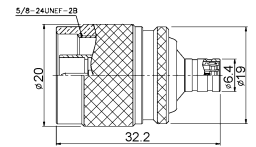
M51811
SMB female to BNC female gold-pin



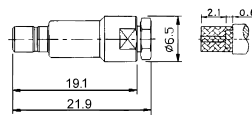
M5163
SMB male clamp type (RG174U/178U)
(gold plated)



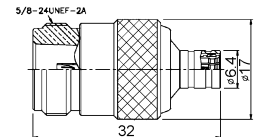
M51830
SMB male to N male
gold-pin



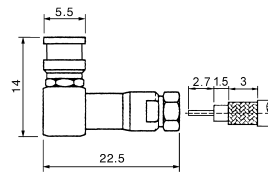
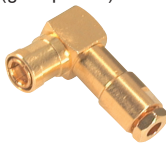
M5164
SMB female clamp type (RG174U/178U)
(gold plated)



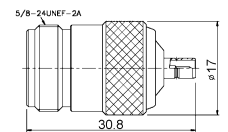
M51831
SMB male to N female
gold-pin



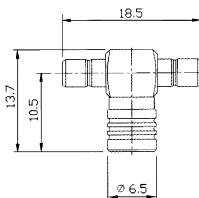
M5165
Right angle SMB male clamp type
(RG174U/178U) (gold plated)



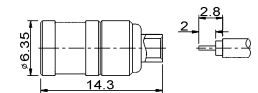
M51832
SMB female to N female
gold-pin



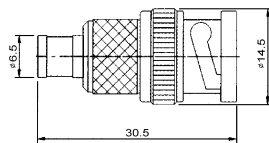
M5170
T-type SMB male to double female
(gold plated)



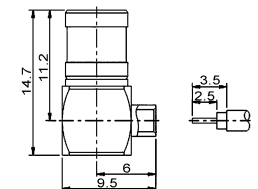
M51950
SMB male solder type
for semi-rigid cable
(RG402U/405U)
(gold plated)



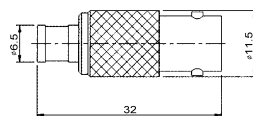
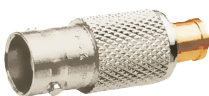
M51800
SMB male to BNC male gold-pin



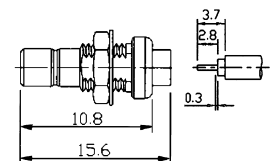
M51951
Right angle SMB male solder type
for semi-rigid cable
(RG402U/405U)
(gold plated)



M51801
SMB male to BNC female gold-pin



M51952
SMB female bulkhead solder type
for semi-rigid cable
(RG402U/405U)
(gold plated)



M51802
SMB male to BNC female bulkhead gold-pin

