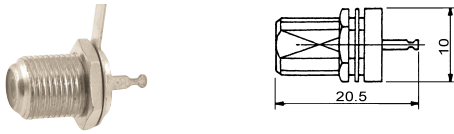
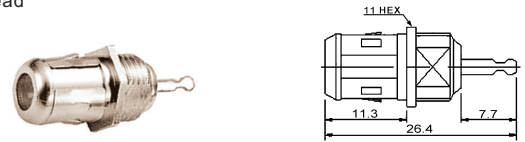


**M56430**  
F female B type bulkhead



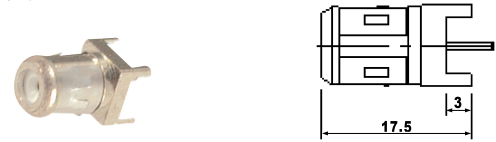
**M564395**  
F female bulkhead



**M56431**  
Double F female bulkhead (F-81)



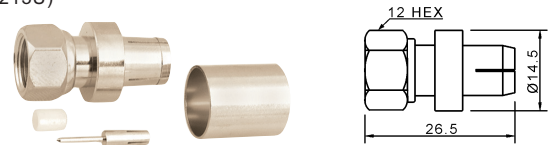
**M56440**  
F female PCB mount



**M56432**  
F quick male to RCA jack



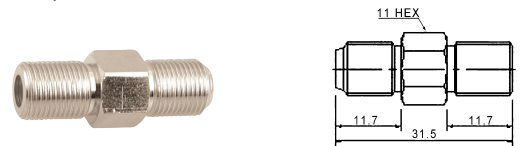
**M56441**  
F male (RG213U)



**M56433**  
F male crimp type (RG58U)



**M56442**  
Double F female tin-pin



**M56435**  
Double F quick male



**M56444**  
F male screw type



**M56436**  
F female bulkhead to RCA jack



**M56447**  
T-type F quick male to double F female tin-pin



**M564375**  
F quick male to PAL male



**M56438**  
F quick male to PAL female



**M56439**  
F male PCB mount tin-pin

