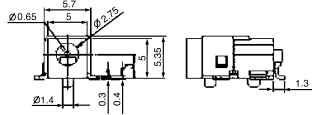


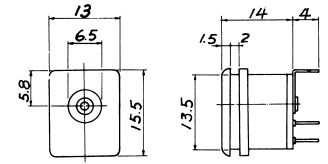


# DC Power Jack

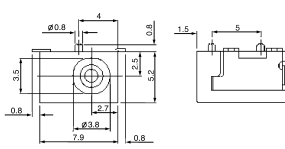
**K372000**  
0.65mm DC POWER JACK  
SMD TYPE



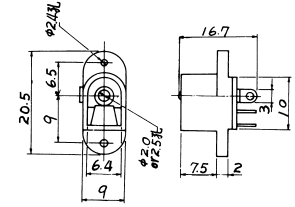
**K375E /F**  
DC POWER JACK  
E: CENTRAL PIN 2mm  
F: CENTRAL PIN 2.5mm



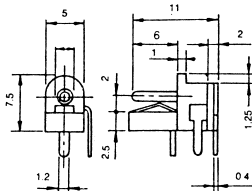
**K372050**  
1.3mm DC POWER JACK  
SMD TYPE



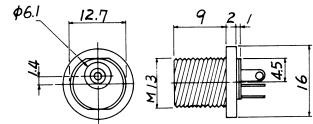
**K375G /H**  
DC POWER JACK  
G: CENTRAL PIN 2mm  
H: CENTRAL PIN 2.5mm



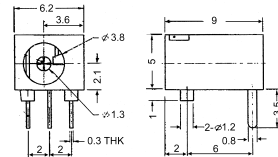
**K37211**  
1.3mm DC POWER JACK



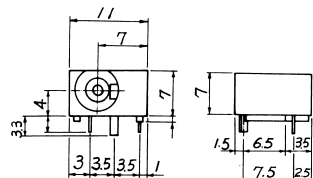
**K375J /K**  
DC POWER JACK  
J: CENTRAL PIN 2mm  
K: CENTRAL PIN 2.5mm



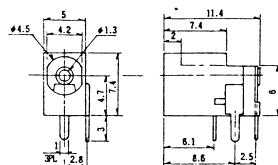
**K37212**  
1.3mm DC POWER JACK



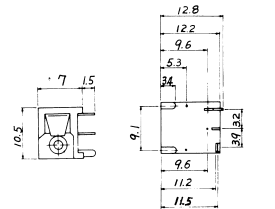
**K375L /M**  
DC POWER JACK  
L: CENTRAL PIN 2mm  
M: CENTRAL PIN 2.5mm



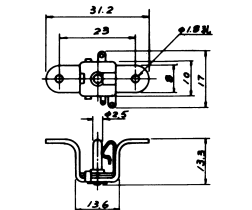
**K37214**  
1.3mm DC POWER JACK



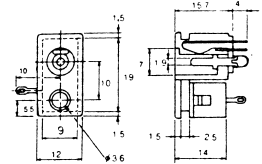
**K375N /P**  
DC POWER JACK  
N: CENTRAL PIN 2mm  
P: CENTRAL PIN 2.5mm



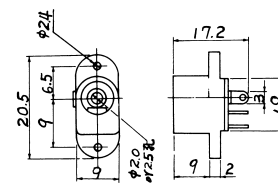
**K372A /B**  
DC POWER JACK  
A: CENTRAL PIN 2mm  
B: CENTRAL PIN 2.5mm



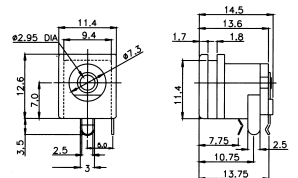
**K375S /T**  
DC POWER JACK  
S: CENTRAL PIN 2mm  
T: CENTRAL PIN 2.5mm



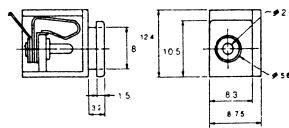
**K374A /B**  
DC POWER JACK  
A: CENTRAL PIN 2mm  
B: CENTRAL PIN 2.5mm



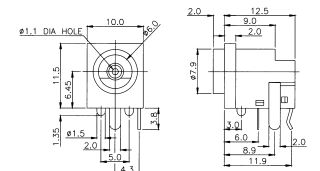
**K375X**  
DC POWER JACK  
X: CENTRAL PIN 2.95mm



**K374E /F**  
DC POWER JACK  
E: CENTRAL PIN 2mm  
F: CENTRAL PIN 2.5mm



**K375Z**  
DC POWER JACK  
Z: CENTRAL HOLE 1.0mm  
(FOR K36750)



**K375A /B**  
DC POWER JACK  
A: CENTRAL PIN 2mm  
B: CENTRAL PIN 2.5mm

