



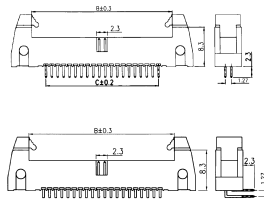
## BOX HEADER 1.27mm

W/LATCH LEVER

STRAIGHT : **YRCxx**

RIGHT ANGLE : **YRDxx**

No. of pins : 06 to 100

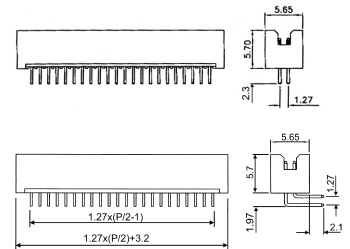


## BOX HEADER 1.27mm

STRAIGHT : **YRCWxx**

RIGHT ANGLE : **YRDWxx**

No. of pins : 10 to 120



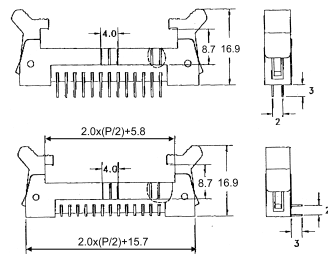
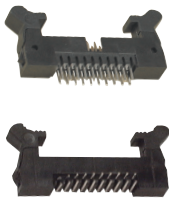
## BOX HEADER 2.0mm

W/LATCH LEVER

STRAIGHT : **YRAxx**

RIGHT ANGLE : **YRBxx**

No. of pins : 10 to 68

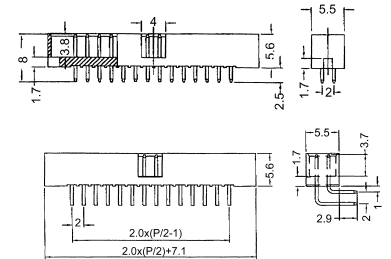
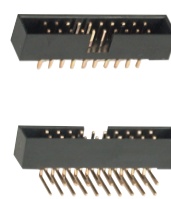


## BOX HEADER 2.0mm

STRAIGHT : **YRAWxx**

RIGHT ANGLE : **YRBWxx**

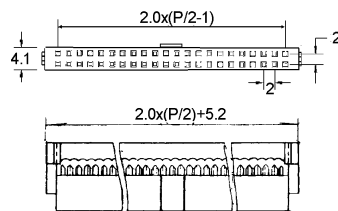
No. of pins : 06 to 64



## IDC SOCKET 2.0mm

**YRGxx**

No. of pins : 10 to 68

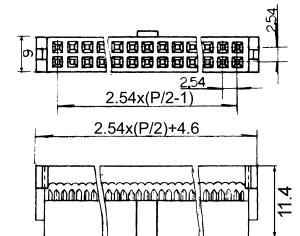


## IDC SOCKET 2.54mm

W/STRAIN RELIEF

**YRFxx**

No. of pins : 06 to 64



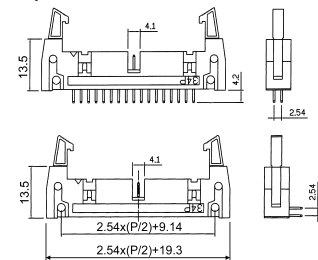
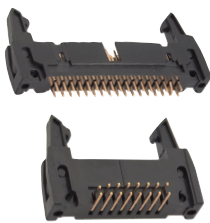
## BOX HEADER 2.54mm

W/LATCH LEVER

STRAIGHT : **YRNxx**

RIGHT ANGLE : **YRRxx**

No. of pins : 10 to 64

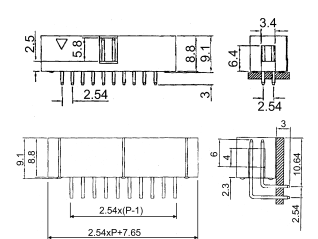
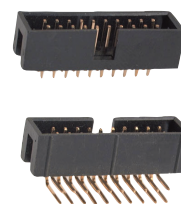


## BOX HEADER 2.54mm

STRAIGHT : **YRNWxx**

RIGHT ANGLE : **YRRWxx**

No. of pins : 06 to 64



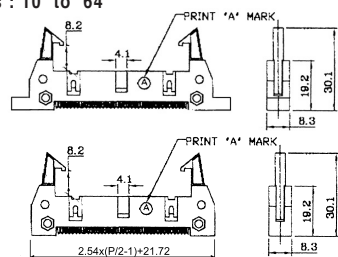
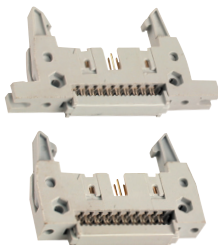
## IDC BOX HEADER 2.54mm

W/LATCH LEVER

W/ EAR : **YRSxx**

W/O EAR : **YRTxx**

No. of pins : 10 to 64



## IDC BOX HEADER 2.54mm

W/ EAR : **YRYxx**

W/O EAR : **YRZxx**

No. of pins : 10 to 64

