



### Features :

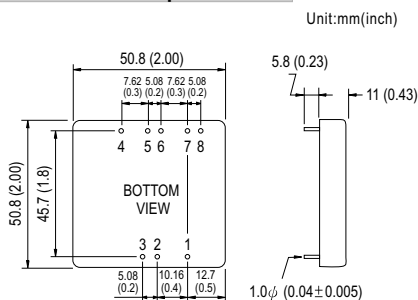
- 2"x2" compact size
- 2:1 wide input range
- High efficiency up to 93%
- 1500VDC I/O isolation
- Built-in remote ON / OFF control
- Built-in remote sense
- Trimming output  $\pm 10\%$
- Comply with CE / FCC without external components
- Protections: Short circuit / Overload / Input and output Over voltage
- Cooling by free air convection
- Six-sided shield metal case
- 100% burn-in test
- Low cost / High reliability
- Output 3.3V available
- 2 years warranty



### SPECIFICATION

ORDER NO.	SKA60A-05	SKA60B-05	SKA60C-05	SKA60A-12	SKA60B-12	SKA60C-12	SKA60A-15	SKA60B-15	SKA60C-15				
OUTPUT	DC VOLTAGE		5V		12V		15V						
	CURRENT RANGE		1.2 ~ 12A		0.5 ~ 5A		0.4 ~ 4A						
	RATED POWER		60W										
	RIPPLE & NOISE (max.) Note.2		60mVp-p			80mVp-p		100mVp-p					
	LINE REGULATION Note.3		$\pm 0.5\%$										
	LOAD REGULATION Note.4		$\pm 0.5\%$										
	VOLTAGE ACCURACY		$\pm 2.0\%$										
	SWITCHING FREQUENCY		250KHz min.										
	EXTERNAL CAPACITANCE LOAD (max.)		1000uF			220uF		100uF					
EXTERNAL TRIM Adj. RANGE(Typ.)		$\pm 10\%$											
INPUT	VOLTAGE RANGE		A: 9 ~ 18VDC B: 18 ~ 36VDC C: 36 ~ 75VDC										
	EFFICIENCY (Typ.)		91%	90.5%	92%	92%	92.5%	92%	92%	93%	92.5%		
	DC CURRENT		Full load		5505mA	2775mA	1370mA	5445mA	2715mA	1370mA	5400mA	2690mA	1370mA
			No load		185mA	120mA	60mA	160mA	120mA	60mA	160mA	120mA	85mA
	FILTER		Pi network										
REMOTE CONTROL		Power ON : R.C ~ -Vin > 2.5VDC or open circuit ; Power OFF : R.C ~ -Vin < 0.5VDC or short											
PROTECTION		Fuse recommended											
PROTECTION (Note. 5)	OVER CURRENT		110% ~ 160% rated output power Protection type : Hiccup mode, recovers automatically after fault condition is removed										
	SHORT CIRCUIT		All output equipped with short circuit Protection type : Hiccup mode, recovers automatically after fault condition is removed										
	OVER VOLTAGE		Input(Typ.)		A: >20 ~ 25VDC B: >40 ~ 50VDC C: >80 ~ 100VDC input voltage Protection type : Shut down o/p voltage, recovers automatically after fault condition is removed								
		Output(Typ.)		5Vo : 7V ~ 8.95V ; 12Vo : 15V ~ 19.2V ; 15Vo : 18V ~ 23.3V Protection type : Clamp by TVS diode									
ENVIRONMENT	WORKING TEMP.		-40 ~ +70°C (Refer to "Derating Curve")										
	CASE TEMP.		+100°C max.										
	WORKING HUMIDITY		20% ~ 90% RH non-condensing										
	STORAGE TEMP., HUMIDITY		-55 ~ +105°C, 10 ~ 95% RH										
	TEMP. COEFFICIENT		$\pm 0.03\% / ^\circ\text{C}$ (0 ~ 50°C)										
VIBRATION		10 ~ 500Hz, 2G 10min./1cycle, period for 60min. each along X, Y, Z axes											
SAFETY & EMC	WITHSTAND VOLTAGE		I/P-O/P: 1.5KVDC										
	ISOLATION RESISTANCE		I/P-O/P: 100M Ohms / 500VDC / 25°C / 70% RH										
	EMI CONDUCTION & RADIATION		Compliance to EN55022 Class A, FCC part 15 Class A without external components										
EMS IMMUNITY		Compliance to EN61000-4-2,3,4,5,6,8, light industry level, criteria A											
OTHERS	DIMENSION		50.8*50.8*11.0 mm or 2**2**0.43" inch (L*W*H)										
	WEIGHT		67g										

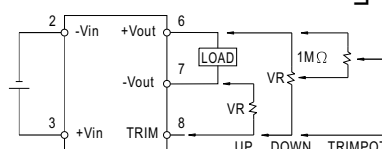
### Mechanical Specification



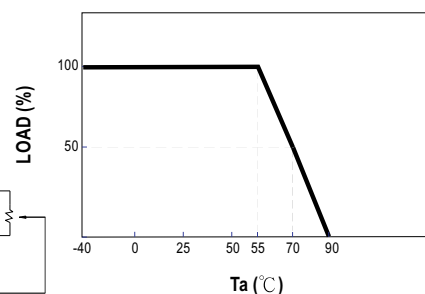
### Pin Configuration

Pin No.	Output	Pin No.	Output
1	R.C	5	+R.S
2	-Vin	6	+Vout
3	+Vin	7	-Vout
4	-R.S	8	TRIM

### External Output Trimming



### Derating Curve



### NOTE

- 1.All parameters are specified at normal input, rated load, 25°C 70% RH ambient.
- 2.Ripple & noise are measured at 20MHz by using a 12" twisted pair terminated with a 0.1uf & 47uf capacitor.
- 3.Line regulation is measured from low line to high line at rated load.
- 4.Load regulation is measured from 10% to 100% rated load.
- 5.Please prevent the converter from operating in overload or short circuit condition for more than 30 seconds.